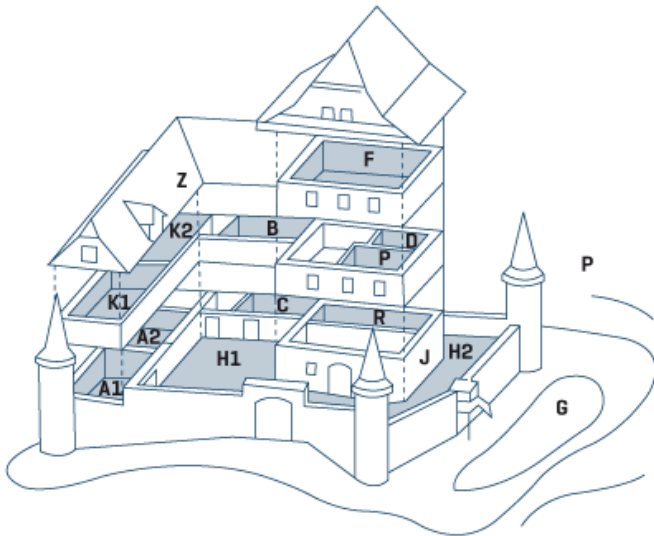


Advents- & Weihnachtsmarkt Wasserschloss Wyher, Ettiswil Freitag, 10. bis Sonntag, 12. November 2023

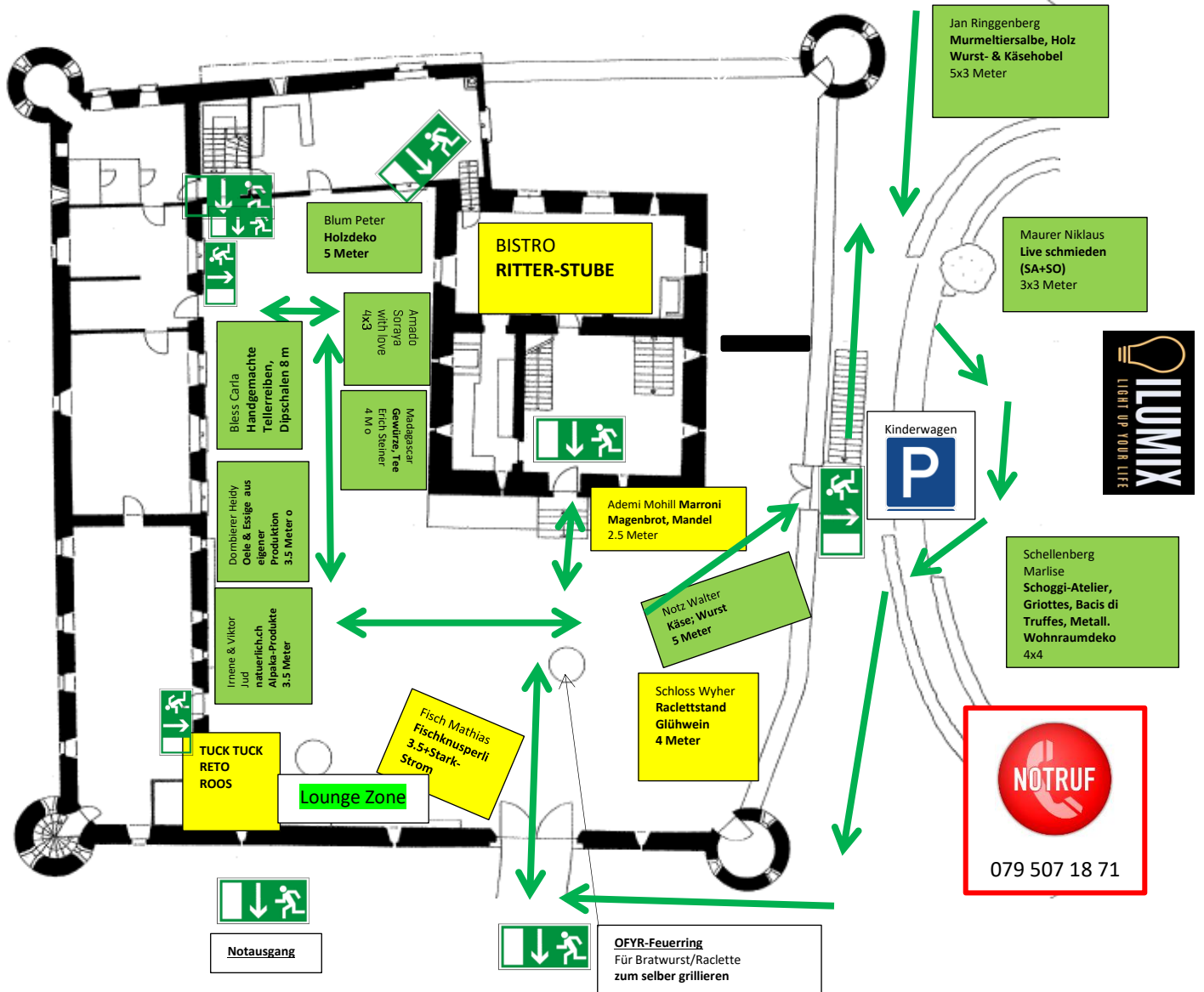
Öffnungszeiten: FR: 17-21 Uhr | SA: 10-21 Uhr | SO: 10-19 Uhr



Schlosshof

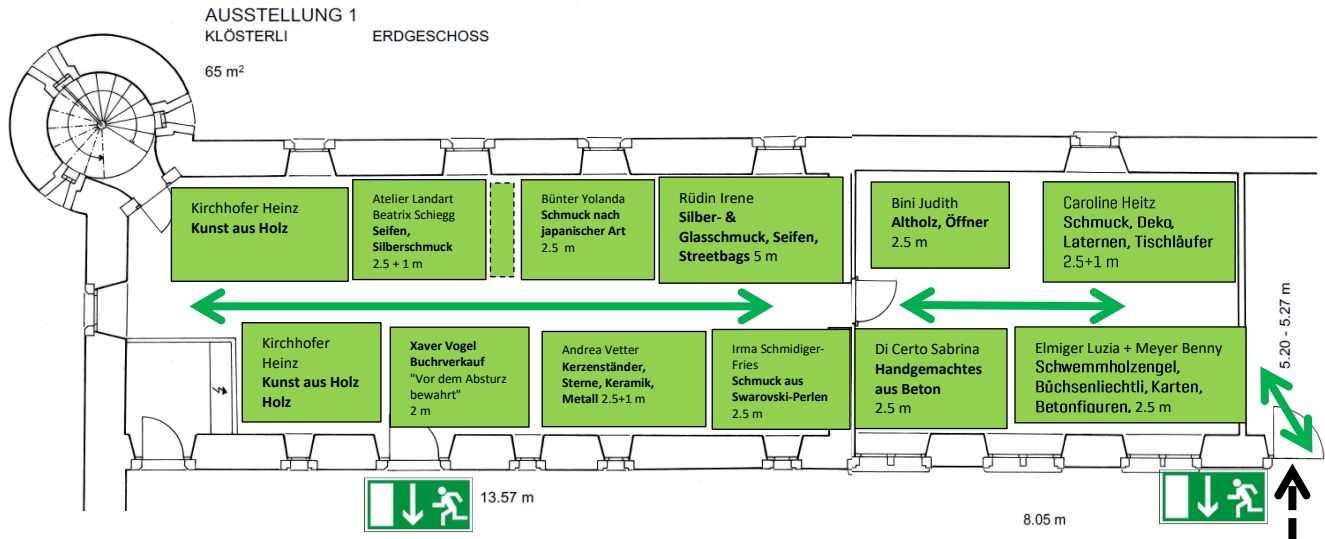
Verpflegungs-Stände

EINGANG & AUSGANG
KASSE



Stallung 1

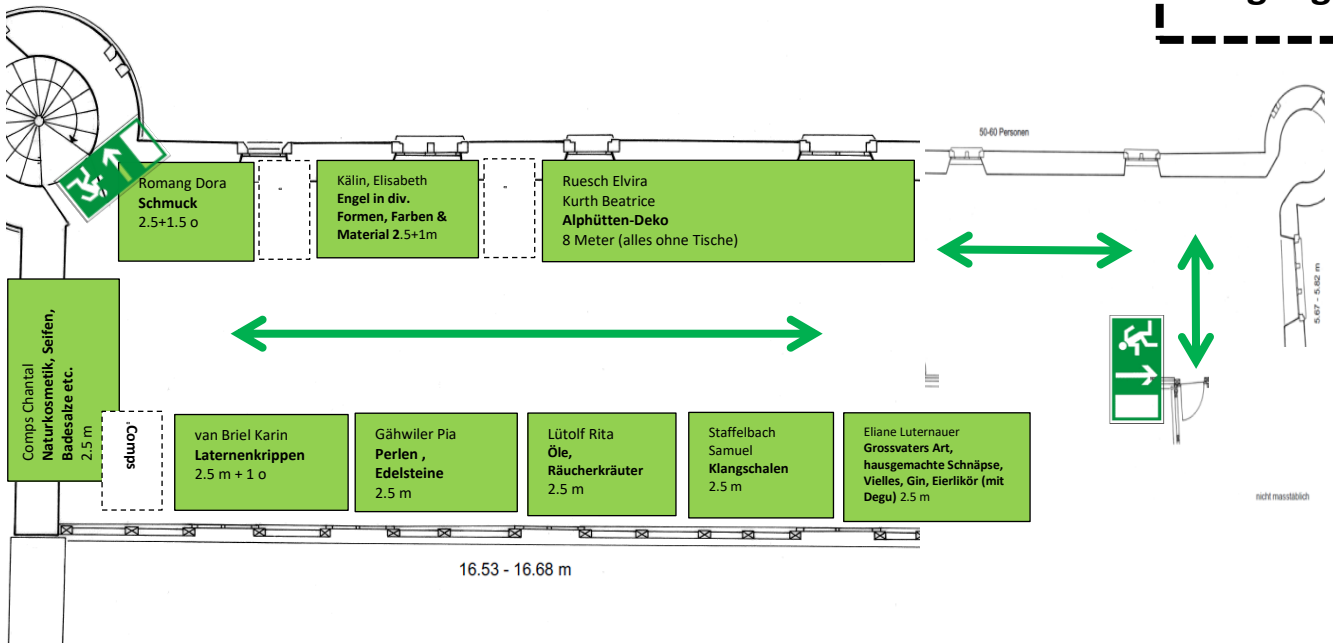
Stallung 2



Klösterli 1

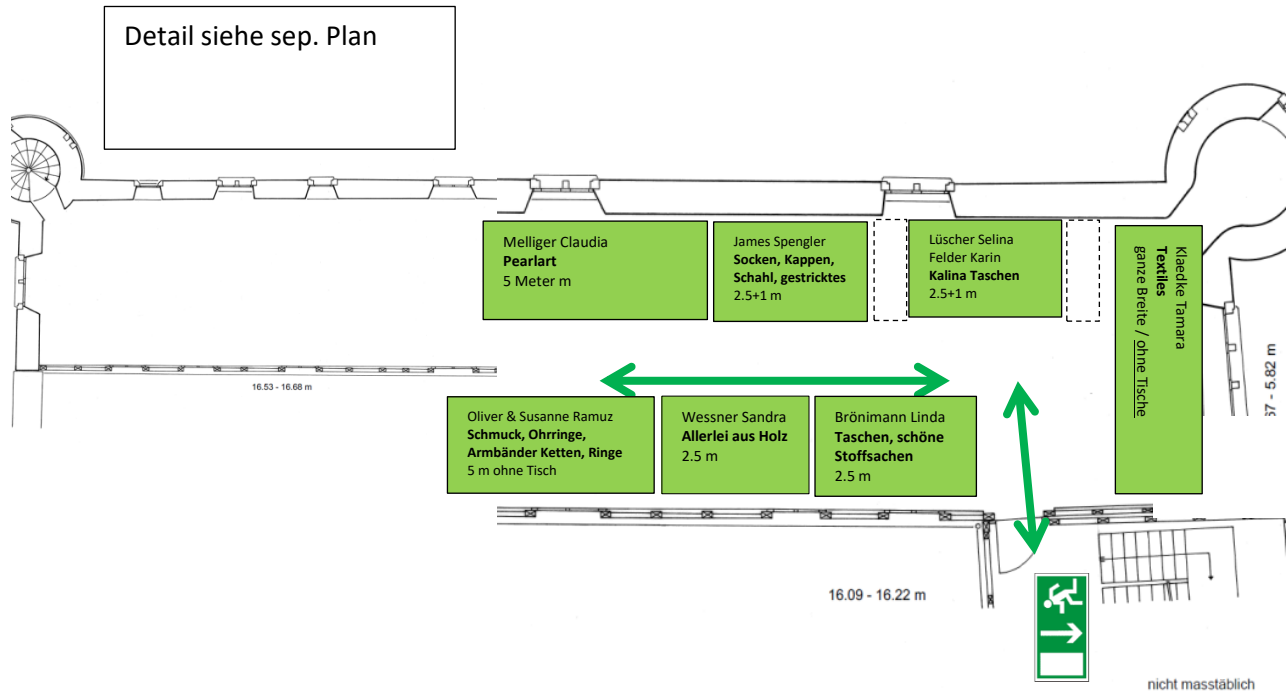
Klösterli 2

Haupt Eingang

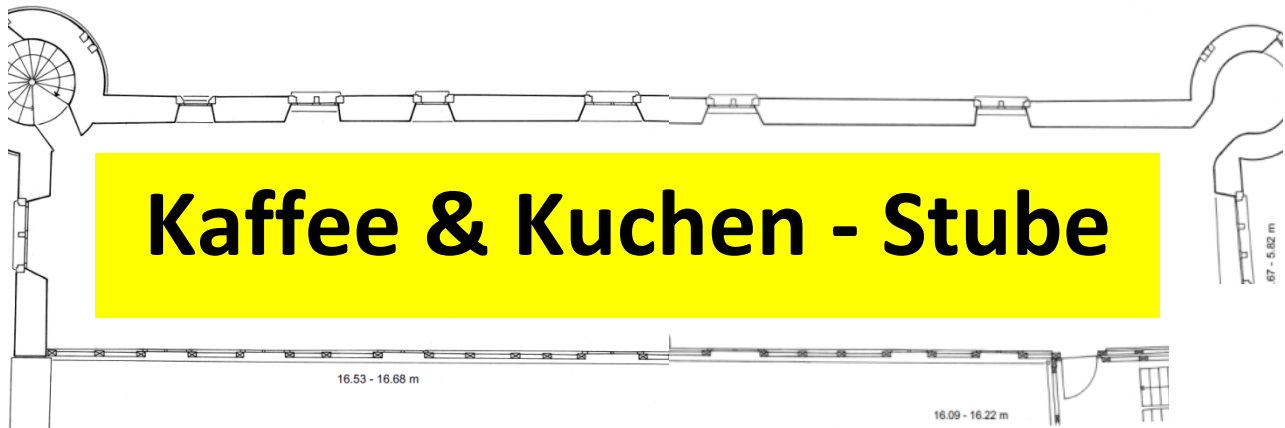


Klösterli 1

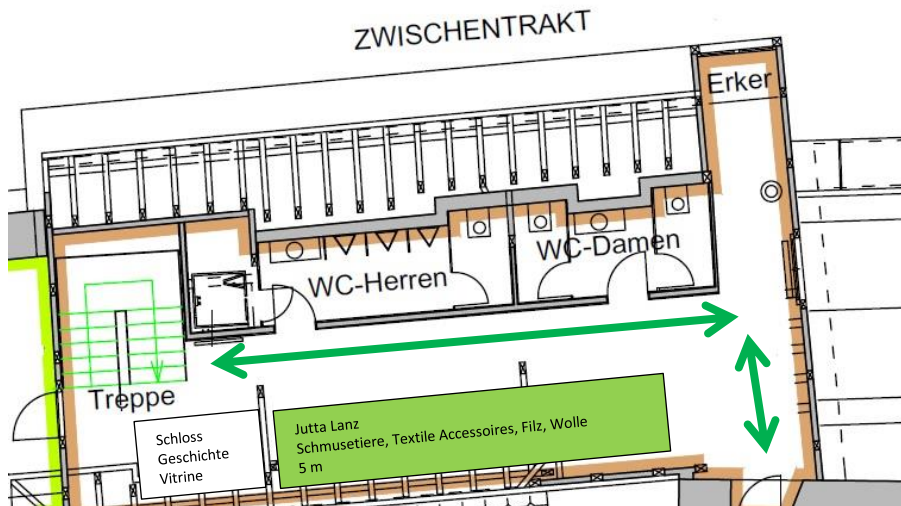
Klösterli 2



Kaffee & Kuchenstube (Dachstock)

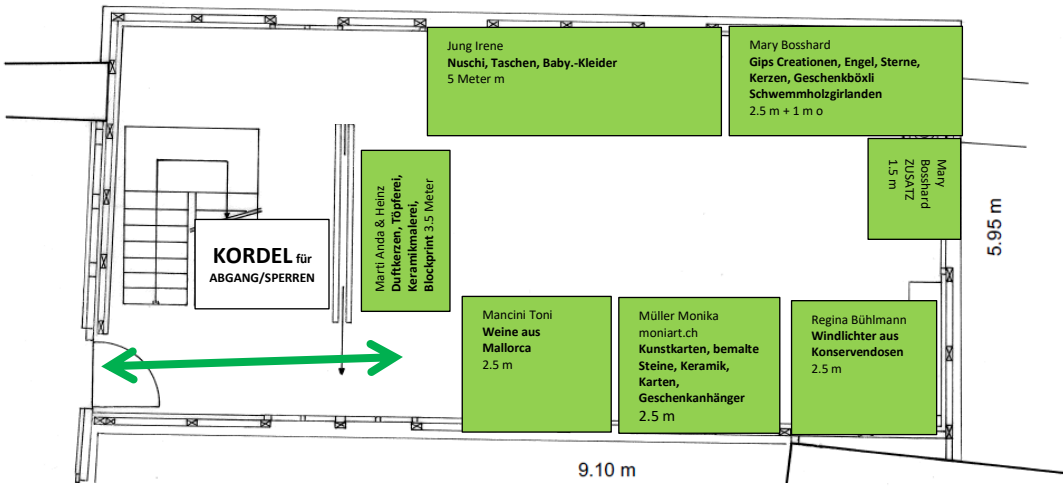


nicht maßstäblich



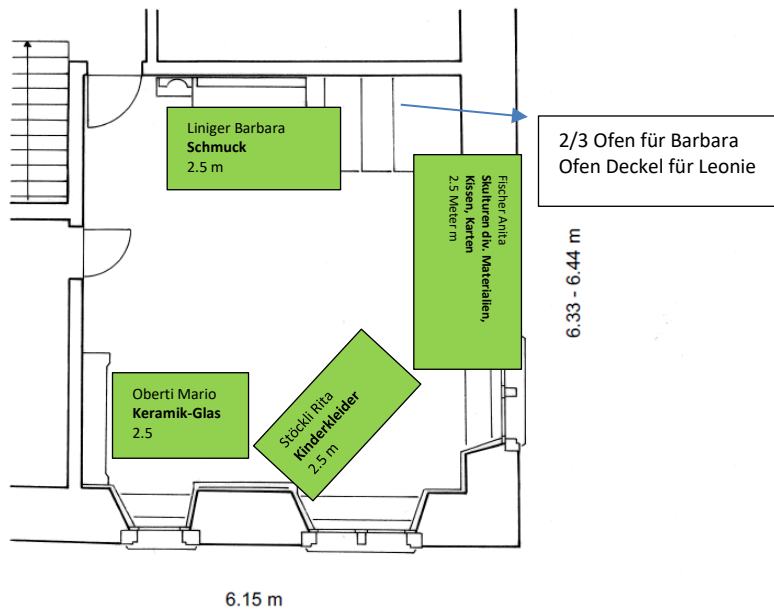
BÜRGER-STUBE
ZWISCHENTRAKT 1. OBERGESCHOSS

54 m² 20-40 Personen



PFYFFER-STUBE
HERRENHAUS 1. OBERGESCHOSS

39 m² 16-24 Personen

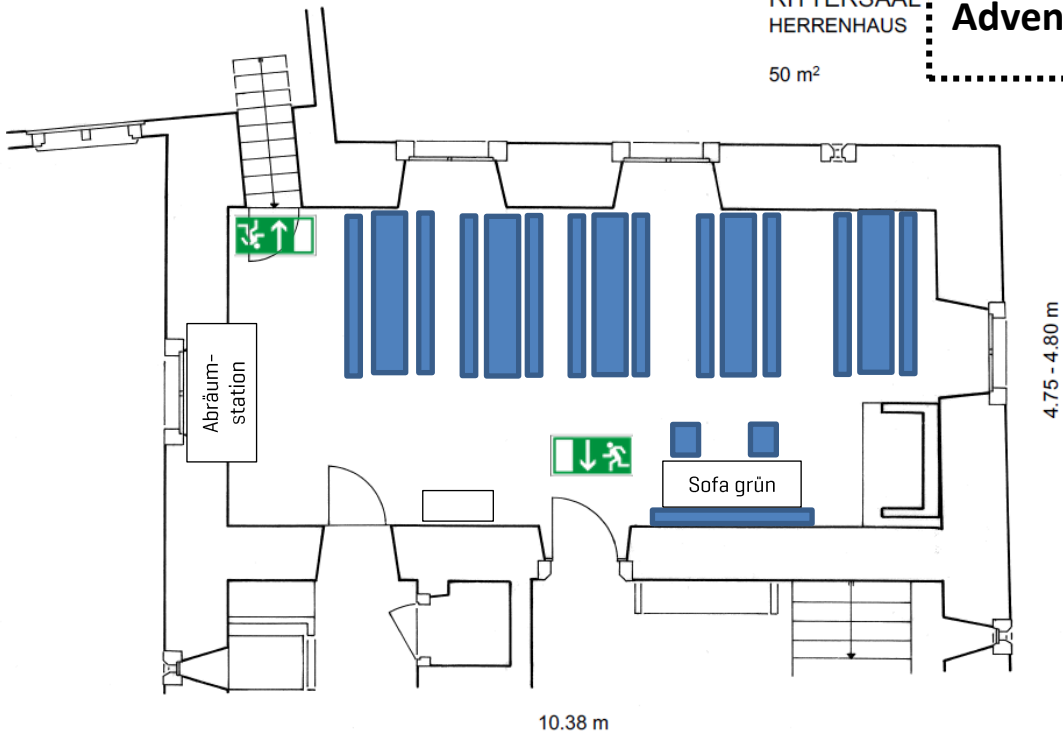


nicht masstäblich

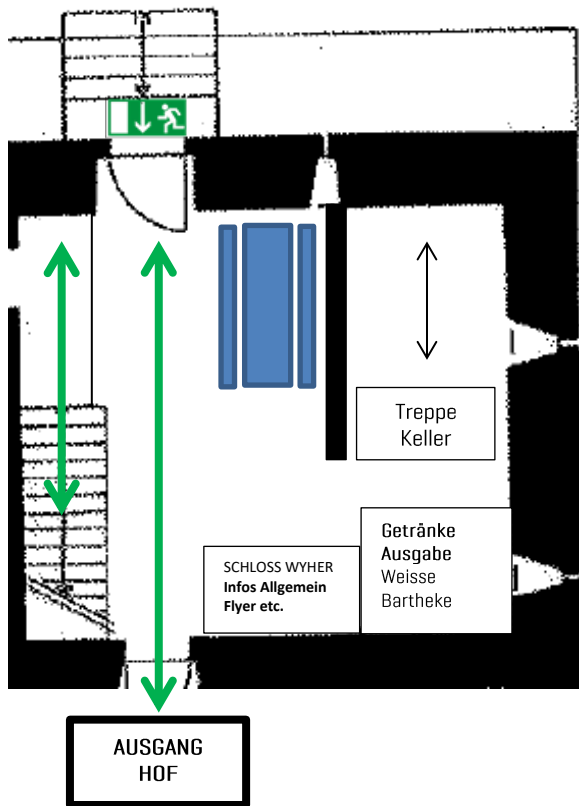
RITTERSAL
HERRENHAUS

Advents-Bistro

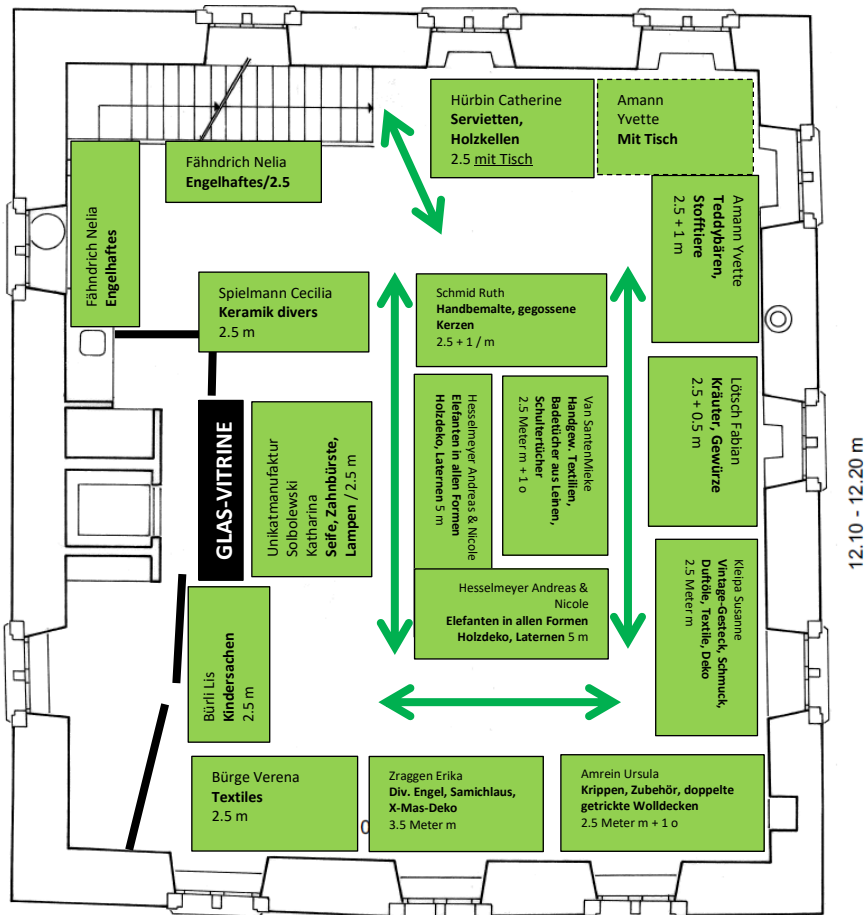
50 m²



Entrée Herrenhaus



FEER-SAAL
HERRENHAUS
2. OBERGESCHOSS



Anfahrtsplan + Parking

Siehe nächste Seite



<https://www.google.ch/maps/place/Wasserschloss+Wyer/@47.1420389,8.0219202,912m/data=!3m2!1e3!4b1!4m5!3m4!1s0x478fdf113eed0869:0xa59b00f2c2315f0!8m2!3d47.1421418!4d8.023535?hl=de>

